

- Coach Areas
- Sleeper Bedrooms
- Food & Beverage
- Toilets & Showers
- Common Use Areas**

Amtrak® Long Distance Product Features

Common Use Areas

- Coach Areas
- Sleeper Bedrooms
- Food & Beverage
- Toilets & Showers
- Common Use Areas**

Amtrak® Long Distance Product Features

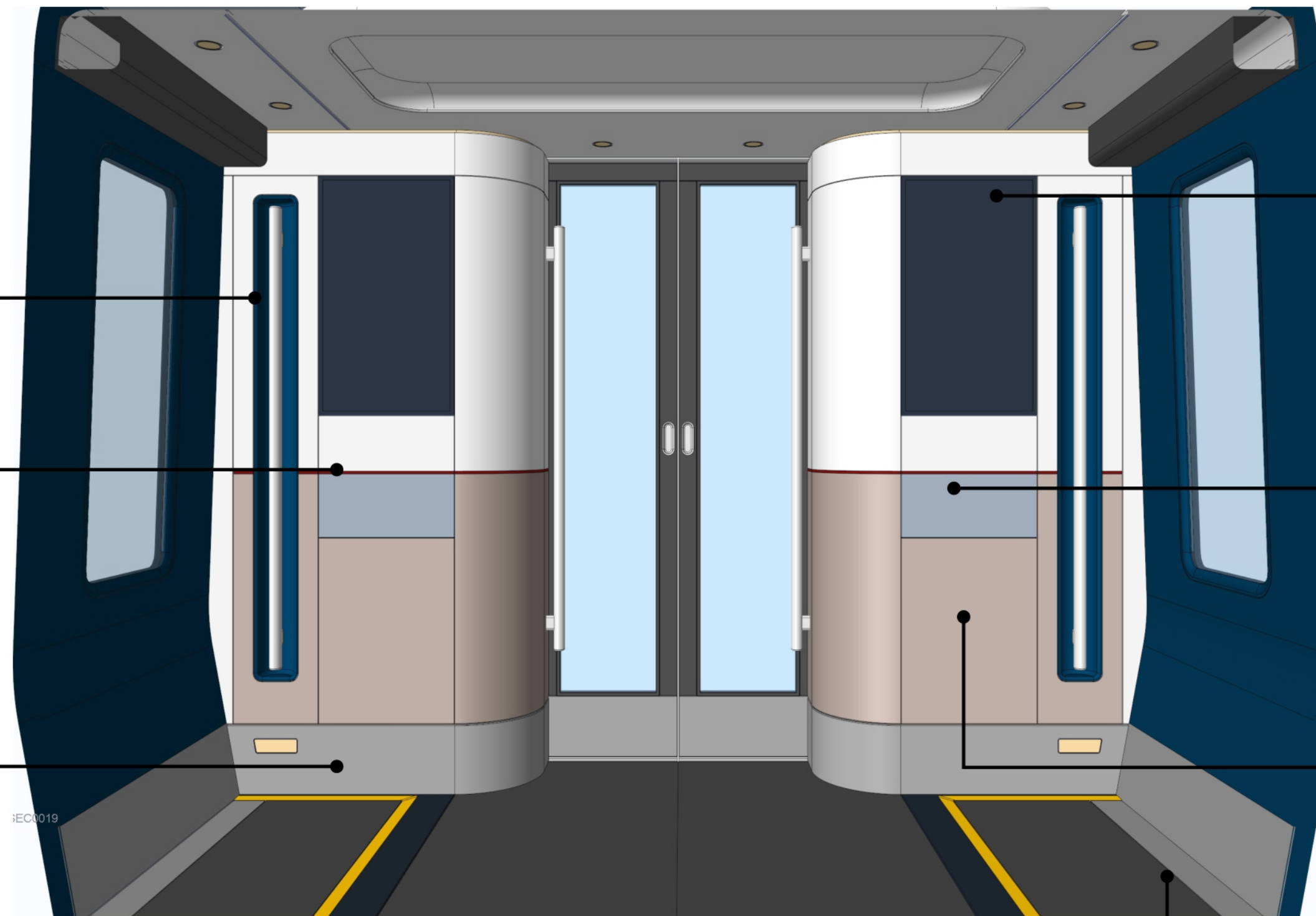
14 | Entrance Area

Entrance Area | Interior Architecture

Handholds
Compliant handholds should be supplied on both sides of each door, at key access point along aisles and on both sides of elevators.

Tide line
There should be a horizontal tide line incorporated into the panel work. The edging between upper and lower panel acts as class identifier.

Kick-strips
Stainless steel kick strips at 9" high.



Passenger Information Screens
Display screens should be supplied on both sides of the door.

Trash Bin
Trash bins on both sides vestibule with stainless steel push flaps. Easy access water tight bin liner for quick cleaning routines and maintenance.

Panel Work
Vestibule monuments should be designed to have well fitted clean panel with a high tolerance build to manage split lines and cabinet edging. There should be no protruding equipment, snag point or dirt traps. All equipment cabinets should be accessible under a crew key with discreet locks.

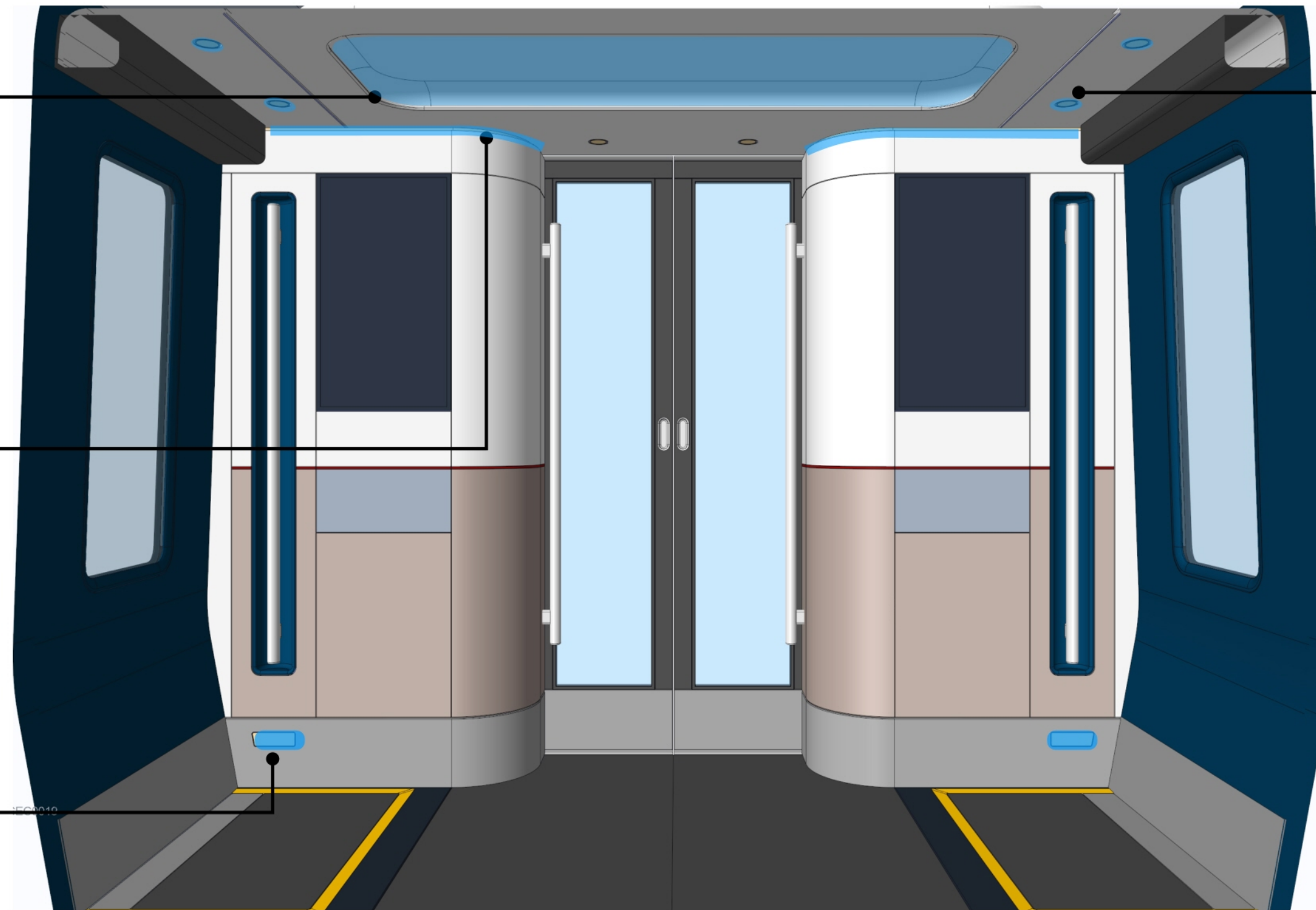
Door Threshold
Should have a slip-free surface and a contrasting floor color to the main vestibule flooring to mark the threshold.

Entrance Area | Lighting

Ceiling Pool Light
 Central lighting well in the ceiling provides indirect mood wash light in the centre of the vestibule.

Module Wash Lights
 Indirect strip lights wash light onto the ceiling from the top of the vestibule monuments..

Step Lights
 Step lights should illuminate interior threshold during boarding sequences.



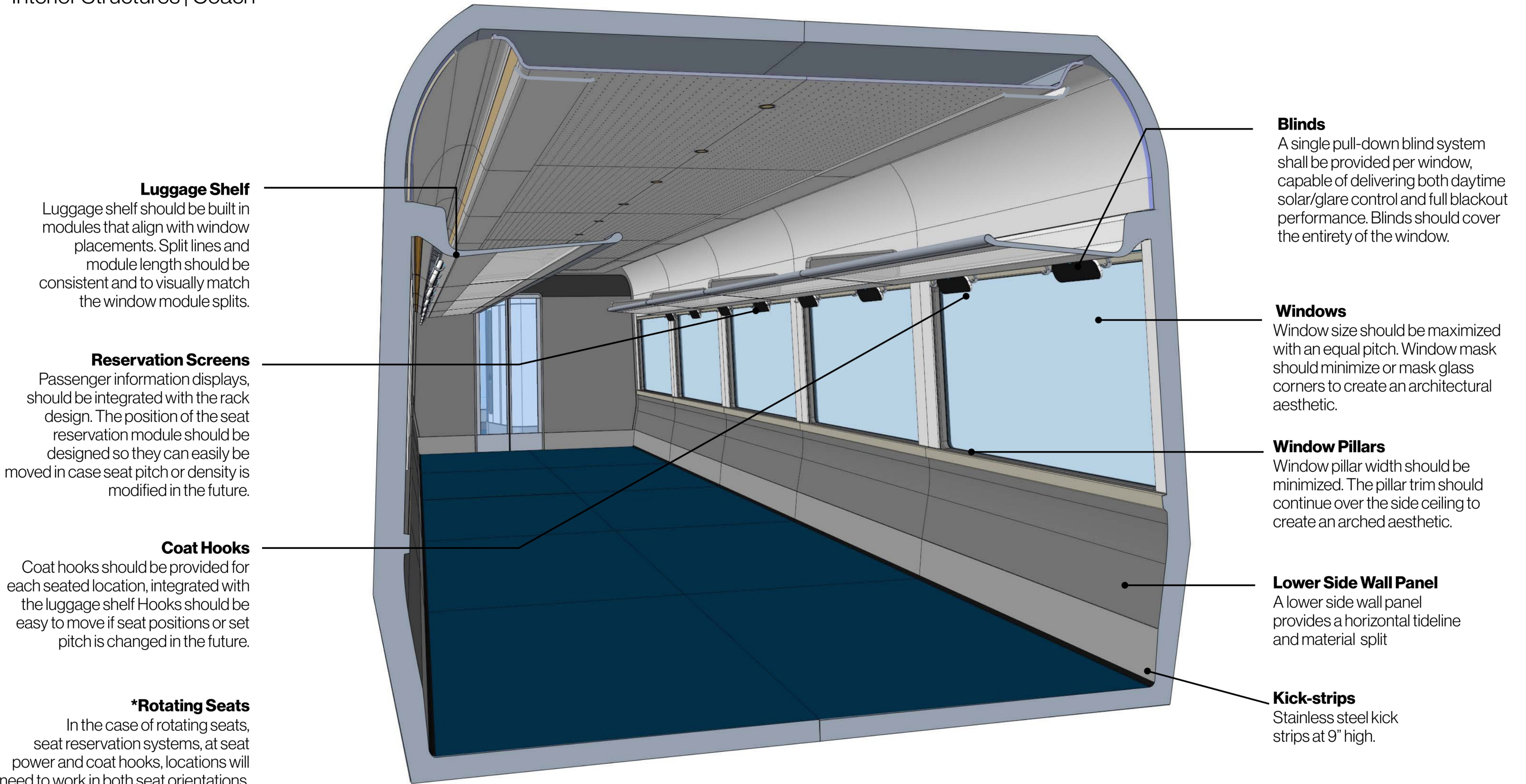
LED Panel Spot Lights
 Spot light over door, elevators and along aisles. Size position and number will be subject to Amtrak approval.

- Coach Areas
- Sleeper Bedrooms
- Food & Beverage
- Toilets & Showers
- Common Use Areas**

Amtrak® Long Distance Product Features

15 | Interior Structure

Interior Structures | Coach



Luggage Shelf

Luggage shelf should be built in modules that align with window placements. Split lines and module length should be consistent and to visually match the window module splits.

Reservation Screens

Passenger information displays, should be integrated with the rack design. The position of the seat reservation module should be designed so they can easily be moved in case seat pitch or density is modified in the future.

Coat Hooks

Coat hooks should be provided for each seated location, integrated with the luggage shelf. Hooks should be easy to move if seat positions or set pitch is changed in the future.

*Rotating Seats

In the case of rotating seats, seat reservation systems, at seat power and coat hooks, locations will need to work in both seat orientations.

Blinds

A single pull-down blind system shall be provided per window, capable of delivering both daytime solar/glare control and full blackout performance. Blinds should cover the entirety of the window.

Windows

Window size should be maximized with an equal pitch. Window mask should minimize or mask glass corners to create an architectural aesthetic.

Window Pillars

Window pillar width should be minimized. The pillar trim should continue over the side ceiling to create an arched aesthetic.

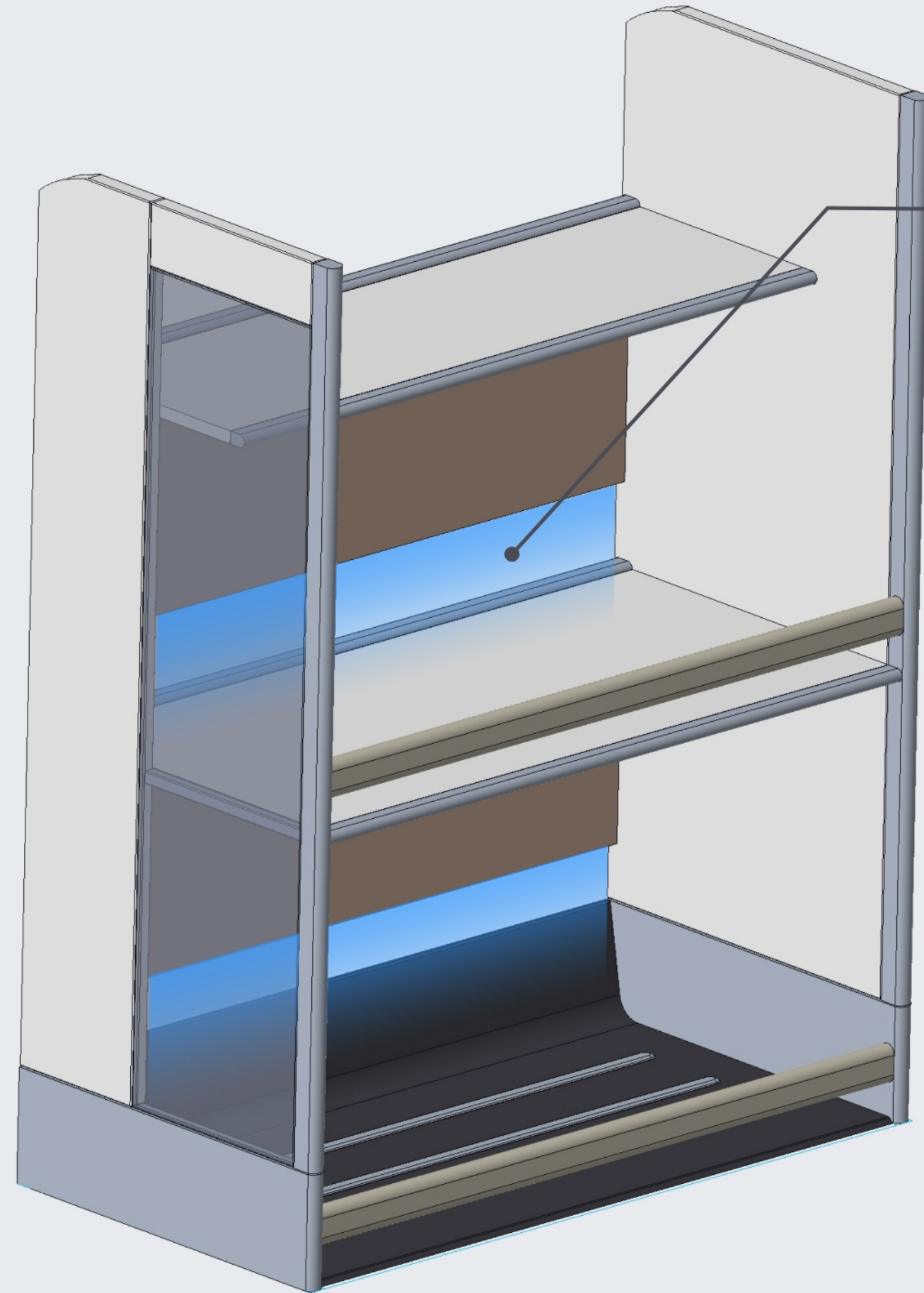
Lower Side Wall Panel

A lower side wall panel provides a horizontal tideline and material split

Kick-strips

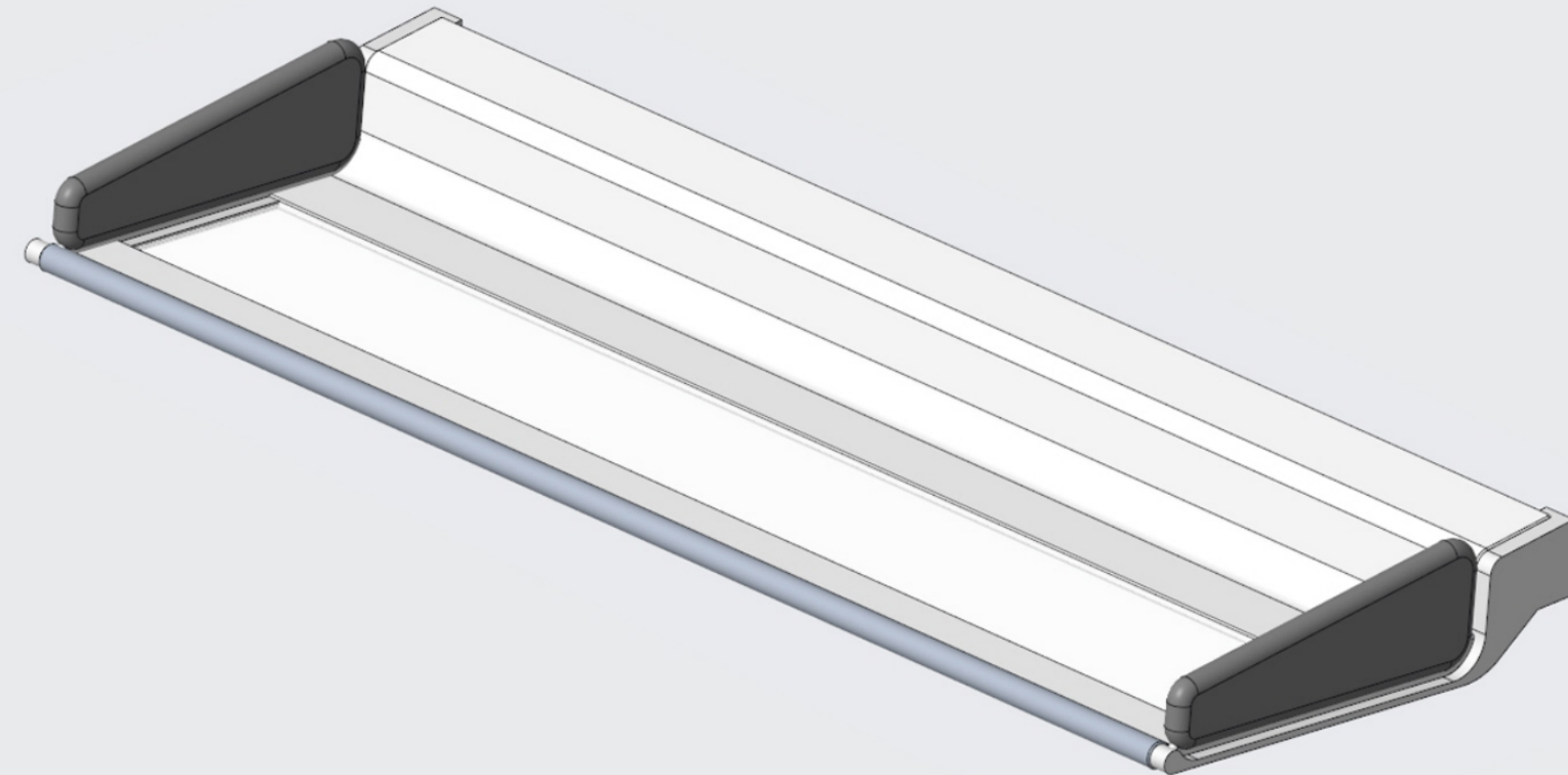
Stainless steel kick strips at 9" high.

Interior Structures | Coach



Shelf Lighting

Luggage towers shall have shelf lighting integrated within the tower.



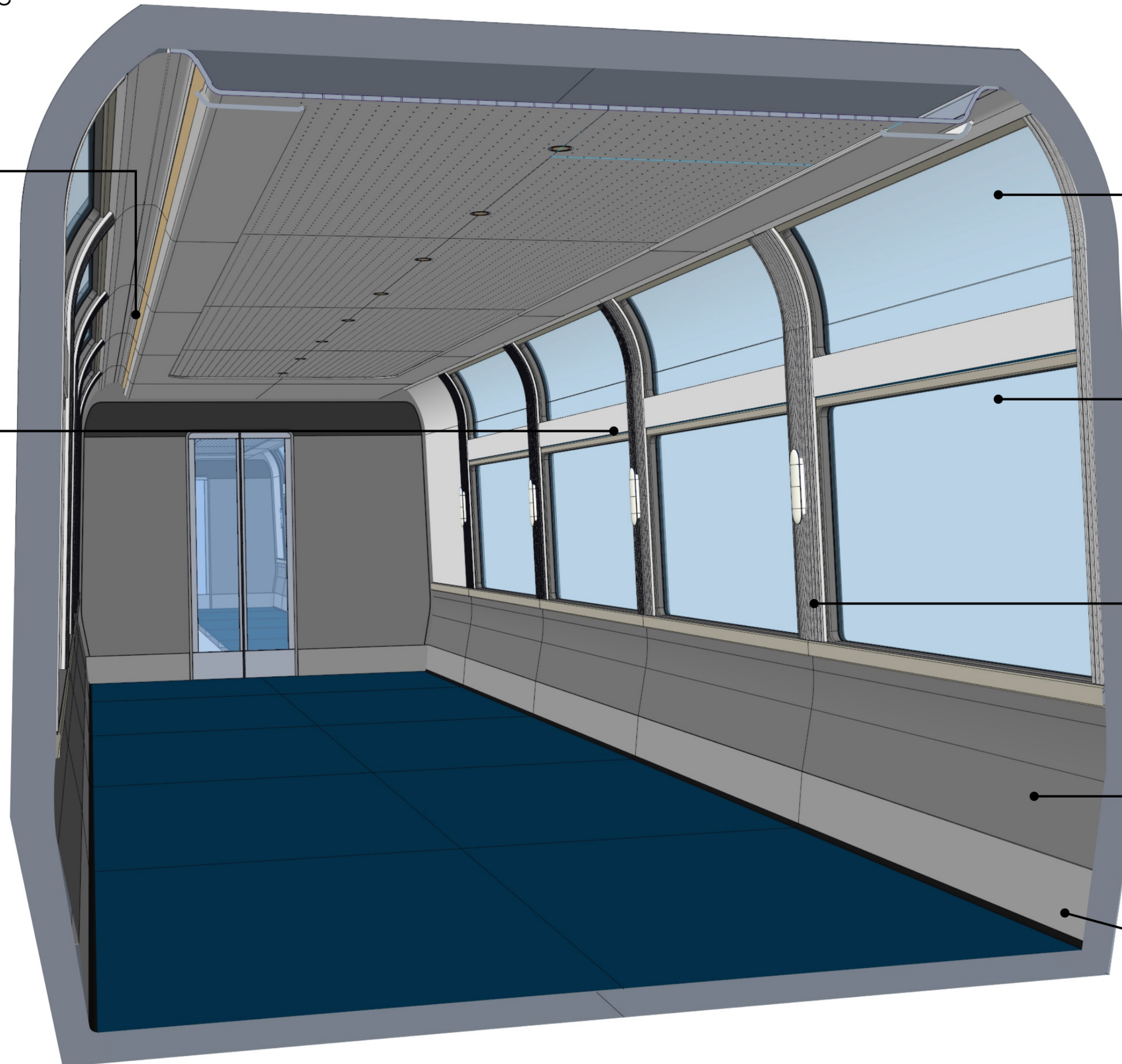
Luggage Shelf

Overhead luggage racks shall be modular and constructed using extruded aluminum to allow different length segments. Rack modules and split lines shall align with window placements and visually correspond with the window module divisions. Coat hooks shall be provided for each seated location and integrated within the luggage rack assembly.

Luggage Tower

Luggage towers shall be constructed as a modular system allowing various tower lengths. Glass side panels shall be provided to allow passengers to view their luggage

Interior Structures | Cafe, Diner, Lounge



Blinds

A single pull-down blind system shall be provided per window, capable of delivering both daytime solar/glare control and full blackout performance. Blinds should cover the entirety of the window. Skylight blinds to be crew controlled

Blind Pelmet

Blinds shall be stored in a pelmet so that they can easily be accessed for maintenance. to be crew controlled

Skylights

Options provided for Skylights in Cafe,

Windows

Window size should be maximized with an equal pitch. Window mask should minimize or mask glass corners to create an architectural aesthetic.

Window Pillars

Window pillar width should be minimized. The pillar trim should continue over the side ceiling to create an arched aesthetic.

Lower Side Wall Panel

A lower side wall panel provides a horizontal tideline and material split

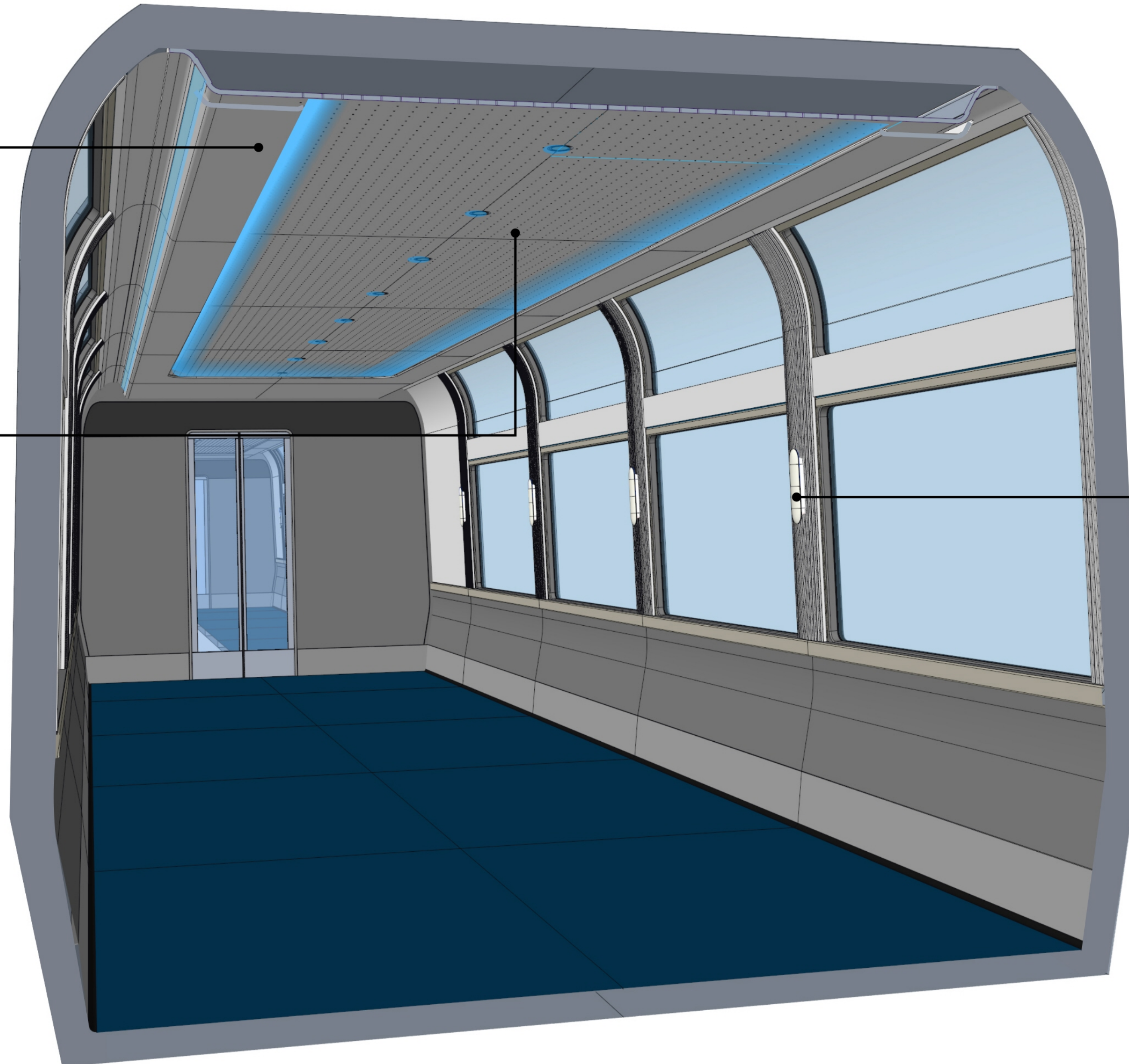
Kick-strips

Stainless steel kick strips at 9" high.

Interior Structures | Lighting

Ceiling Lighting
Ceiling lighting should be consistent across all car types. Wash lighting from both sides of the lighting gondola lights central panel and side ceiling.

Spot Lighting
LED panel spot lights. Downlighting spots light the aisle.



Wall Lights
Additional wall lights shall be provided in Cafe, Diner and Lounge areas

- Coach Areas
- Sleeper Bedrooms
- Food & Beverage
- Toilets & Showers
- Common Use Areas**

Amtrak® Long Distance Product Features

16 | Hallways

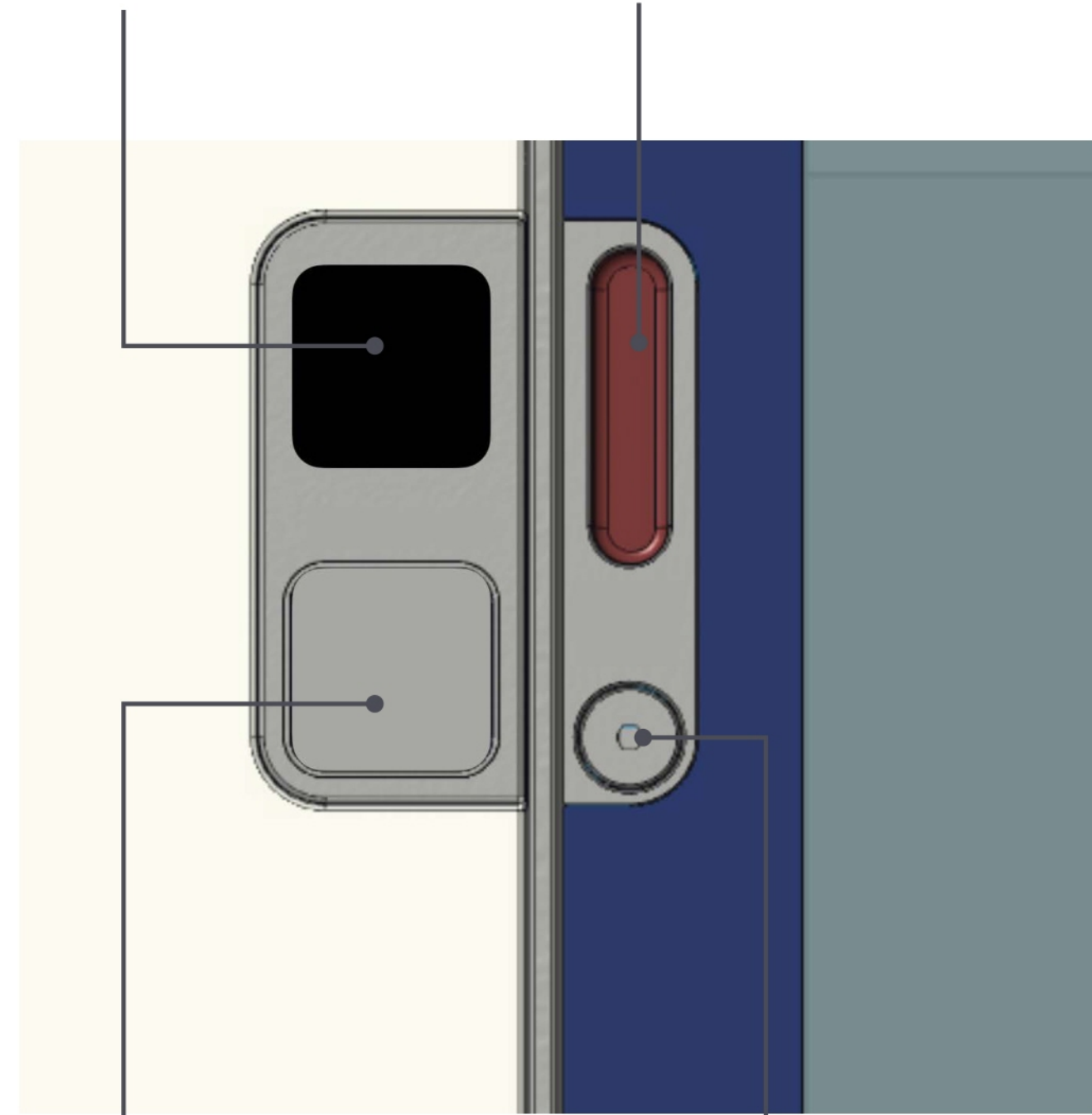
Hallways | Room Doors

Room Badge

Room numbering, room state signaling.

Handle

Accessible grip with called out contrasting color in class signifier

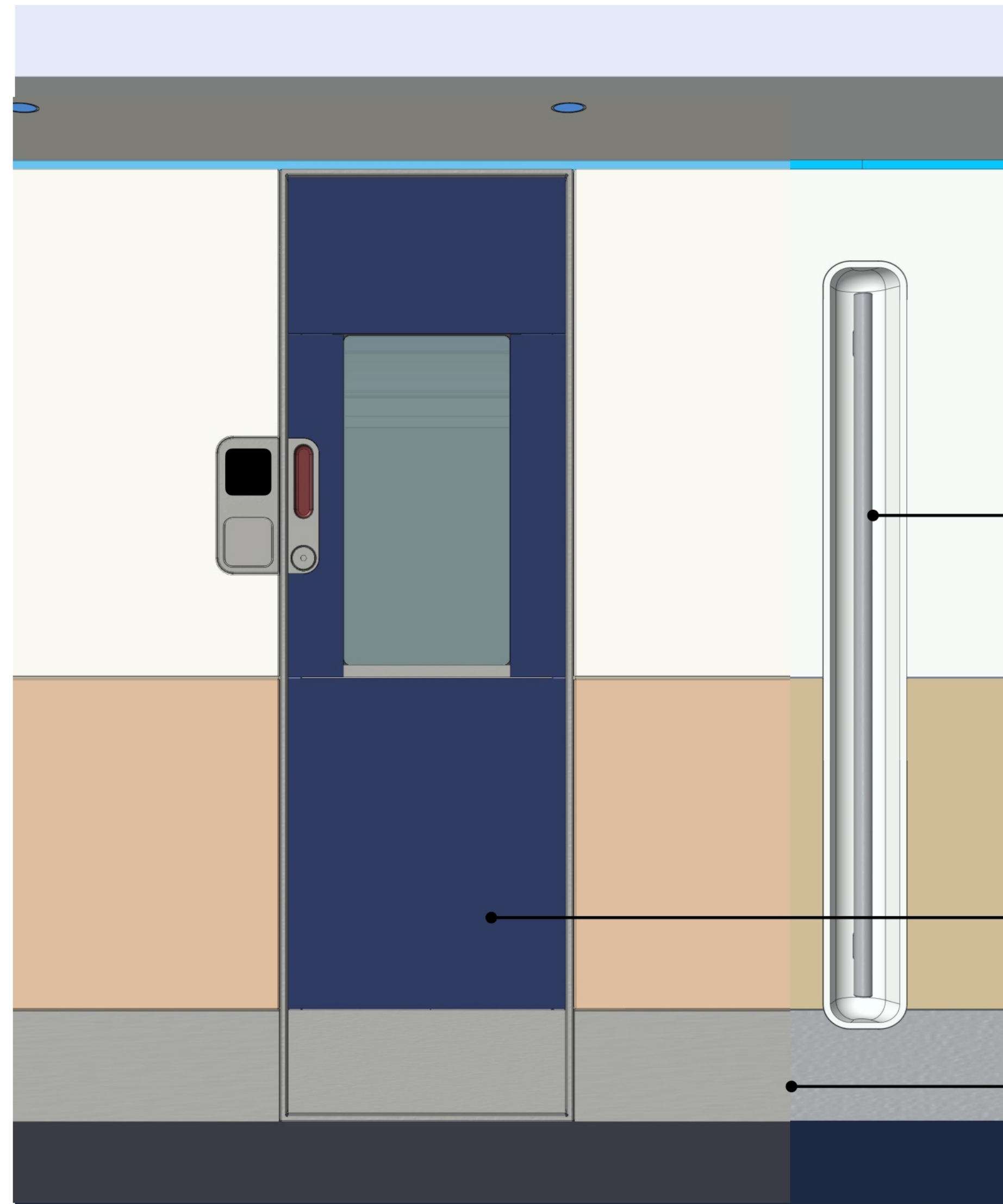


Keyless Entry

Technology defined elsewhere. Modular approach to panel so tech can be updated and swapped in the future.

Manual Override

External manual lock override with crew key.



Handholds

Hallways should provide handholds either at junction between bedroom modules or along the side wall.

Doors

Sliding doors should be called out in a separate color in line with CMF attachment.

Kick-strips

Stainless steel kick strips at 9" on both sides of the aisle and across bottom top the door.

Hallways | Lighting

Panel Spot lights

Spot lights provides downlighting



Module Wash Lights

Indirect strip lights wash light onto the ceiling from the top of bedroom monuments..

